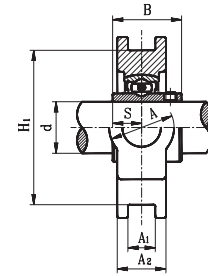
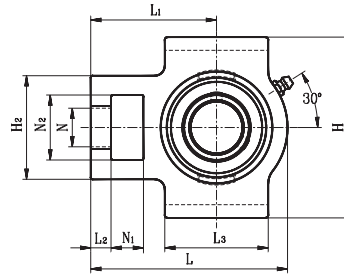


# TAKE UP UNITS

## UCST STANDARD DUTY SET SCREW LOCKING TYPE - WIDE SLOT



- Cast iron housing - wide slot
- Wide inner ring bearing

Unit No.	Shaft Dia. d		Dimensions (in) (mm)														Bearing No.	Housing No.	Weight (lb)	
	(in.)	(mm)	N1	L2	H2	N2	N	L3	A1	H1	H	L	A	A2	L1	B				S
UCST201 201-8 202 202-10 203 203-11 204-12 204	1/2 5/8 11/16 3/4	12 15 17 20																UC201 201-8 202 202-10 203 203-11 204-12 204	T204	1.80
UCST205-14 205-15 205	7/8 15/16	25	5/8 16	13/32 10	2 51	1-1/4 32	3/4 19	2 51	17/32 13.5	3 76	3-1/2 89	3-13/16 97	1-1/4 32	15/16 24	2-7/16 62	1-11/32 34.0	9/16 14.3	UC205-14 205-15 205 205-16	T205	1.90
UCST206-18 206 206-19 206-20	1-1/8 1-3/16 1-1/4	30	5/8 16	13/32 10	2-7/32 56	1-15/32 37	7/8 22	2-1/4 57	17/32 13.5	3-1/2 89	4-1/32 102	4-7/16 113	1-15/32 37	1-3/32 28	2-3/4 70	1-1/2 38.1	5/8 15.9	UC206-18 206 206-19 206-20	T206	2.90
UCST207-20 207-21 207-22 207 207-23	1-1/4 1-5/16 1-3/8 1-7/16	35	5/8 16	1/2 13	2-17/32 64	1-15/32 37	7/8 22	2-17/32 64	17/32 13.5	3-1/2 89	4-1/32 102	5-3/32 129	1-15/32 37	1-3/16 30	3-1/16 78	1-11/16 42.9	11/16 17.5	UC207-20 207-21 207-22 207 207-23	T207	3.70
UCST208-24 208-25 208	1-1/2 1-9/16	40	3/4 19	5/8 16	3-9/32 83	1-15/16 49	1-5/32 29	3-1/4 83	11/16 17.5	4-1/32 102	4-1/2 114	5-11/16 144	1-15/16 49	1-5/16 33	3-15/32 88	1-15/16 49.2	3/4 19.0	UC208-24 208-25 208	T208	5.50
UCST209-26 209-27 209-28 209	1-5/8 1-11/16 1-3/4	45	3/4 19	5/8 16	3-9/32 83	1-5/16 49	1-5/32 29	3-1/4 83	11/16 17.5	4-1/32 102	4-5/8 117	5-11/16 144	1-15/16 49	1-3/8 35	3-7/16 87	1-15/16 49.2	3/4 19.0	UC209-26 209-27 209-28 209	T209	5.50
UCST210-30 210-31 210	1-7/8 1-15/16	50	3/4 19	5/8 16	3-9/32 83	1-15/16 49	1-5/32 29	3-3/8 86	11/16 17.5	4-1/32 102	4-5/8 117	5-7/8 149	1-15/16 49	1-15/32 37	3-9/16 90	2-1/32 51.6	3/4 19.0	UC210-30 210-31 210	T210	5.70
UCST211-32 211-34 211 211-35	2 2-1/8 2-3/16	55	1 25	3/4 19	4-1/32 102	2-17/32 64	1-3/8 35	3-3/4 95	1-1/16 27	5-1/8 130	5-3/4 146	6-23/32 171	2-17/32 64	1-1/2 38	4-3/16 106	2-3/16 55.6	7/8 22.2	UC211-32 211-34 211 211-35	T211	8.80
UCST212-36 212 212-38 212-39	2-1/4 2-3/8 2-7/16	60	1-1/4 32	3/4 19	4-1/32 102	2-17/32 64	1-3/8 35	4-1/32 102	1-1/16 27	5-1/8 130	5-3/4 146	7-21/32 194	2-17/32 64	1-21/32 42	4-11/16 119	2-9/16 65.1	1 25.4	UC212-36 212 212-38 212-39	T212	10.80

\* Dual seal standard. Triple lip seal (R3 suffix) optional.

