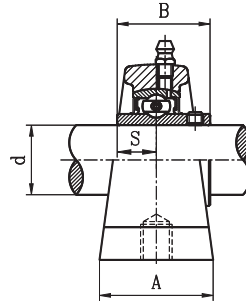
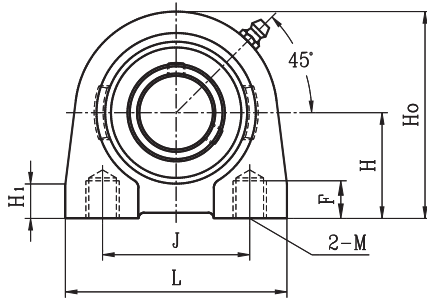


TAPPED BASE PILLOW BLOCKS

UCPA STANDARD DUTY SET SCREW LOCKING TYPE



- Cast iron housing.
- Wide inner ring bearing

Unit No.	Shaft Dia. d		Dimension (in.) (mm)										Bearing No.	Housing No.	Weight (lb)	
	(in.)	(mm)	H	L	J	A	H ₀	H ₁	S	B	F	M				
UCPA201																
201-8	1/2	12														
202		15														
202-10	5/8	17	1-5/16	2	2	1-1/2	2-9/16	15/32	1/2	1-7/32	1/2	3/8-16UNC				
203		17	33.30	73.0	50.80	38.0	65.0	12	12.7	31.0	13		PA204A	1.39		
203-11	11/16															
204-12	3/4															
204		20														
UCPA205-14	7/8															
205-15	15/16		1-7/16	3	2	1-1/2	2-13/16	15/32	19/16	1-11/32	1/2	3/8-16UNC				
205		25	36.50	76.2	50.80	38.0	71.4	12	14.3	34.0	13		PA205A	1.76		
205-16	1															
UCPA206-18	1-1/8															
206		30	1-11/16	4	3	1-1/2	3-3/8	19/32	5/8	1-1/2	5/8	7/16-14UNC				
206-19	1-3/16		42.90	101.6	76.20	38.0	85.7	15	15.9	38.1	16		PA206A	2.64		
206-20	1-1/4															
UCPA207-20	1-1/4															
207-21	1-5/16		1-7/8	4-1/4	3-1/4	1-7/8	3-3/4	5/8	11/16	1-11/16	3/4	1/2-13UNC				
207-22	1-3/8		47.60	108.0	82.50	47.6	95.2	16	17.5	42.9	19		PA207A	3.74		
207		35														
207-23	1-7/16															
UCPA208-24	1-1/2		1-15/16	4-5/8	3-1/2	1-7/8	3-15/16	5/8	3/4	1-15/16	3/4	1/2-13UNC				
208-25	1-9/16		49.20	117.5	88.90	47.6	100.0	16	19.0	49.2	19		PA208A	4.4		
208		40														
UCPA209-26	1-5/8															
209-27	1-11/16		2-1/8	5	3-3/4	2	4-1/4	23/32	3/4	1-15/16	3/4	1/2-13UNC				
209-28	1-3/4		53.98	127.0	95.25	50.8	108.0	18	19.0	49.2	19		PA209A	4.84		
209		45														
UCPA210-30	1-7/8															
210-31	1-15/16		2-1/4	5-1/2	4	2	4-5/8	23/32	3/4	2-1/32	31/32	5/8-11UNC				
210		50	57.15	139.7	101.60	50.8	117.5	18	19.0	51.6	25		PA210A	6.16		
210-32	2															

* Dual seal standard. Triple lip seal (R3 suffix) optional.

