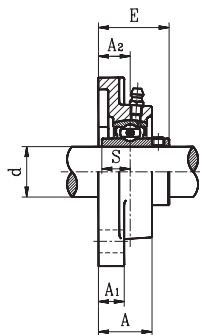
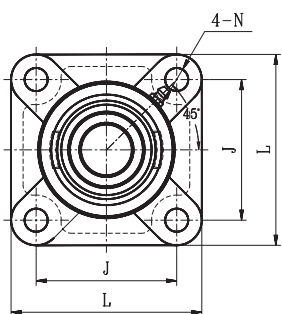


SQUARE FLANGE UNITS

UCF STANDARD DUTY SET SCREW LOCKING TYPE



- Cast iron housing
- Wide inner ring bearing

Unit No.	Shaft Dia. d		Dimension (in) (mm)								Bolt Size (in)	Bearing No.	Housing No.	Weight (lb)	
	(in.)	(mm)	L	J	A ₂	A ₁	A	E	N	S					
UCF201S		12													
201-8S	1/2	15	3	2-1/8	19/32	7/16	31/32	1-7/32	7/16	7/16	3/8	UC201 201-8S 202S 202-10S 203S 203-11S	F203S	1.14	
202S	5/8	17	76	54	15	11	24.5	30.9	11.5	11/5					
202-10S															
203S	11/16														
UCF201		12													
201-8	1/2	15									3/8	UC201 201-8 202 202-10 203 203-11 204-12 204	F204	1.41	
202	5/8	17	3-3/8	2-17/32	19/32	7/16	1	1-5/16	7/16	1/2					
202-10			86	64	15	11	25.5	33.3	11.5	12.7					
203	11/16														
203-11	3/4	20													
204-12															
UCF205-14		12													
205-15	7/8	15	3-3/4	2-3/4	5/8	1/2	1-1/16	1-13/32	7/16	9/16	3/8	UC205-14 205-15 205 205-16	F205	1.76	
205	15/16	25	95	70	16	13	27.0	35.7	11.5	14.3					
205-16	1														
UCF206-18		12													
206	1-1/8	30	4-1/4	3-9/32	23/32	1/2	1-7/32	1-19.32	7/16	5/8	3/8	UC206-18 206 206-19 206-20	F206	2.35	
206-19	1-3/16		108	83	18	13	31.0	40.2	11.5	15.9					
206-20	1-1/4														
UCF207-20		12													
207-21	1-1/4	35	4-19/32	3-5/8	3/4	19/32	1-11/32	1-3/4	9/16	11/16	1/2	UC207-20 207-21 207-22 207 207-23	F207	3.08	
207-22	1-5/16		117	92	19	15	34.0	44.4	14.0	17.5					
207	1-3/8														
207-23	1-7/16														
UCF208-24		12													
208-25	1-1/2	40	5-1/8	4-1/32	27/32	19/32	1-13/32	2-1/32	9/16	3/4	1/2	UC208-24 208-25 208	F208	3.96	
208	1-9/16		130	102	21	15	36.0	51.2	14.0	19.0					
UCF209-26		12													
209-27	1-5/8	45	5-13/32	4-1/8	7/8	5/8	1-1/2	2-1/16	5/8	3/4	9/16	UC209-26 209-27 209-28 209	F209	4.85	
209-28	1-11/16		137	105	22	16	38.0	52.2	16.0	19.0					
209	1-3/4														
UCF210-30		12													
210-31	1-7/8	50	5-5/8	4-3/8	7/8	5/8	1-9/16	2-5/32	23/32	3/4	5/8	UC210-30 210-31 210	F210	5.29	
210	1-15/16		143	111	22	16	40.0	54.6	18.0	19.0					
UCF211-32		12													
211-34	2	55	6-3/8	5-1/8	1	23/32	1-11/16	2-5/16	23/32	7/8	5/8	UC211-32 211-34 211 211-35	F211	7.71	
211	2-1/8		162	130	25	18	43.0	58.4	18.0	22.2					
211-35	2-3/16														
UCF212-36		12													
212	2-1/4	60	6-29/32	5-5/8	1-5/32	23/32	1-29/32	2-23/32	23/32	1	5/8	UC212-36 212 212-38 212-39	F212	9.25	
212-38	2-3/8		175	143	29	18	48.0	68.7	18.0	25.4					
212-39	2-7/16														
UCF213-40		12													
213	2-1/2	65	7-3/8	5-7/8	1-3/16	7/8	1-31/32	2-3/4	23/32	1	5/8	UC213-40 213	F213	11.68	
			187	149	30	22	50.0	69.7	18.0	25.4					
UCF214-44		12													
214	2-3/4	70	7-5/8	6	1-7/32	7/8	2-1/8	2-31/32	23/32	1-3/16	5/8	UC214-44 214	F214	13.00	
			193	152	31	22	54.0	75.4	18.0	30.2					
UCF215-47		12													
215	2-15/16	75	7-7/8	6-1/4	1-11/32	7/8	2-7/32	3-3/32	23/32	1-5/16	5/8	UC215-47 215 215-48	F215	13.88	
215-48	3		200	159	34	22	56.0	78.5	18.0	33.3					
UCF216		12													
		80	8-3/16	6-1/2	1-11/32	7/8	2-1/4	3-9/32	7/8	1-5/16	3/4	UC216	F216	16.09	
			208	165	34	22	57.0	83.3	22.0	33.3					
UCF217-52		12													
217	3-1/4	85	8-21/32	6-29/32	1-13/32	15/16	2-15/32	3-7/16	29/32	1-11/32	3/4	UC217-52 217	F217	19.62	
			220	175	36	24	63.0	87.6	23.0	34.1					
UCF218-56		12													
218	3-1/2	90	9-1/4	7-3/8	1-9/16	1	2-11/16	3-25/32	29/32	109/16	3/4	UC218-56 218	F218	25.52	
			235	187	40	25	68.0	96.3	23.0	39.7					

* Dual seal standard. Triple lip seal (R3 suffix) optional.

