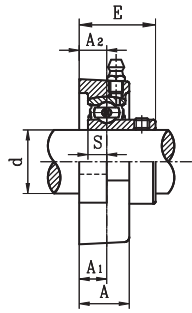
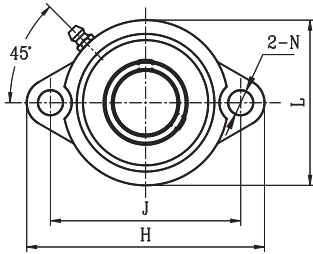
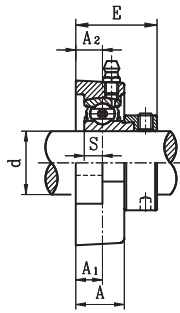


# OVAL FLANGE UNITS

## SBLF LIGHT DUTY SET SCREW LOCKING TYPE



SBLF



SALF



- Cast iron housing
- Narrow inner ring bearing

Unit No.	Shaft Dia. d		Dimension (in) (mm)									Bolt Size (in)	Bearing No.	Housing No.	Weight (lb)	
	(in.)	(mm)	H	J	L	A <sub>2</sub>	A	A <sub>1</sub>	N	S	E					
<b>SBLF201G</b>		12														
<b>201-8G</b>	1/2	15	3-3/16	2-1/2	2-7/32	3/8	23/32	3/8	5/16	1/4	1	1/4	SB201G	LF203S	0.590	
<b>202G</b>	5/8	17	81	63.5	56	9.5	18	9.5	8	6.0	25.5		201-8G			
<b>202-10G</b>													202G			
<b>203G</b>													202-10G			
<b>203-11G</b>	11/16												203G		0.550	
<b>SBLF204-12G</b>	3/4	20	3-9/16	2-13/16	2-13/32	7/16	25/32	7/16	13/32	9/32	1-5/32	5/16	SB204-12G	LF204	0.720	
<b>204G</b>			90	71.5	61	11	20	11.0	10	7.0	29.0		204G			
<b>SBLF205-14G</b>	7/8	25	3-3/4	3	2-17/32	7/16	25/32	7/16	13/32	5/16	1-7/32	5/16	SB205-14G	LF205	0.083	
<b>205-15G</b>	15/16	1	95	76	64	11	20	11.0	10	7.5	30.5		205-15G			
<b>205G</b>													205G			
<b>205-16G</b>													205-16G			
<b>SBLF206-18G</b>	1-1/8	30	4-15/32	3-9/16	3	15/32	7/8	15/32	15/32	5/16	1-11/32	3/8	SB206-18G	LF206	1.230	
<b>206G</b>	1-3/16		113	90.5	76	12	22.5	12.0	12	8.0	34.0		206G			
<b>206-19G</b>	1-1/4												206-19G			
<b>206-20G</b>													206-20G			
<b>SBLF207-20G</b>	1-1/4	35	4-13/16	3-15/16	3-1/2	1/2	1	17/32	15/32	11/32	1-7/16	3/8	SB207-20G	LF207	1.760	
<b>207-21G</b>	1-5/16		122	100	89	13	24	13.0	12	8.5	36.5		207-21G			
<b>207-22G</b>	1-3/8												207-22G			
<b>207G</b>													207G			
<b>207-23G</b>	1-7/16												207-23G			

## SALF LIGHT DUTY ECCENTRIC LOCKING COLLAR TYPE

Unit No.	Shaft Dia. d		Dimension (in) (mm)									Bolt Size (in)	Bearing No.	Housing No.	Weight (lb)
	(in.)	(mm)	H	J	L	A <sub>2</sub>	A	A <sub>1</sub>	N	S	E				
<b>SALF201G</b>		12													
<b>201-8G</b>	1/2	15	3-3/16	2-1/2	2-7/32	3/8	23/32	3/8	5/16	1/4	1-1/4	1/4	SA201G	LF203	0.660
<b>202G</b>	5/8	17	81	63.5	56	9.5	18	9.5	8	6.5	31.6		201-8G		
<b>202-10G</b>													202G		
<b>203G</b>													202-10G		
<b>203-11G</b>	11/16												203G		0.620
<b>SALF204-12G</b>	3/4	20	3-9/16	2-13/16	2-13/32	7/16	25/32	7/16	13/32	5/16	1-11/32	5/16	SA204-12G	LF204	0.730
<b>204G</b>			90	71.5	61	11.0	20	11.0	10	7.5	34.4		204G		
<b>SALF205-14G</b>	7/8	25	3-3/4	3	2-17/32	7/16	25/32	7/16	13/32	5/16	1-11/32	5/16	SA205-14G	LF205	0.093
<b>205-15G</b>	15/16	1	95	76.0	64	11.0	20	11.0	10	7.5	34.4		205-15G		
<b>205G</b>													205G		
<b>205-16G</b>													205-16G		
<b>SALF206-18G</b>	1-1/8	30	4-15/32	3-9/16	3	15/32	7/8	15/32	15/32	11/32	1-17/32	3/8	SA206-18G	LF206	1.320
<b>206G</b>	1-3/16		113	90.5	76	12.0	22.5	12.0	12	9.0	38.7		206G		
<b>206-19G</b>	1-1/4												206-19G		
<b>206-20G</b>													206-20G		
<b>SALF207-20G</b>	1-1/4	35	4-13/16	3-15/16	3-1/2	17/32	15/16	17/32	15/32	3/8	1-21/32	3/8	SA207-20G	LF207	1.870
<b>207-21G</b>	1-5/16		122	100.0	89	13.0	24	13.0	12	9.5	42.4		207-21G		
<b>207-22G</b>	1-3/8												207-22G		
<b>207G</b>													207G		
<b>207-23G</b>	1-7/16												207-23G		

\* Full cover metal shroud seal standard. Full contact rubber seal (2RS suffix) optional.  
Non-relubricatable units also available (remove G suffix). Contact factory.

