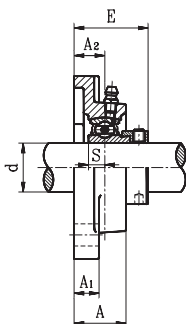
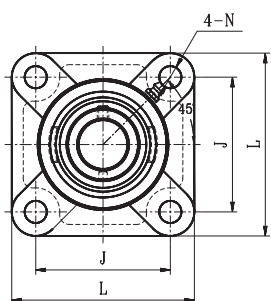


# SQUARE FLANGE UNITS

## SAF LIGHT DUTY ECCENTRIC LOCKING COLLAR TYPE



- Cast iron housing
- Narrow inner ring bearing

Unit No.	Shaft Dia. d		Dimension (in) (mm)								Bolt Size (in)	Bearing No.	Housing No.	Weight (lb)											
	(in.)	(mm)	L	J	A <sub>2</sub>	A <sub>1</sub>	A	E	N	S															
SAF201	1/2	12	3	2-1/8	19/32	7/16	1	1-15/32	7/16	1/4	3/8	SA201	F203	0.95											
201-8		15													76	54	15	11	24.5	37.1	11.5	6.5	201-8	0.95	
202		5/8													17	76	54	15	11	24.5	37.1	11.5	6.5	202	0.92
202-10		11/16													17	76	54	15	11	24.5	37.1	11.5	6.5	202-10	0.92
203		11/16													17	76	54	15	11	24.5	37.1	11.5	6.5	203	0.92
203-11	11/16	17	76	54	15	11	24.5	37.1	11.5	6.5	3/8	203-11	0.92												
SAF204-12	3/4	20	3-3/8	2-17/32	19/32	7/16	1	1-1/2	7/16	9/32	3/8	SA204-12	F204	1.21											
204	3/4	20	86	64	15	11	25.5	38.4	11.5	7.5	3/8	204	1.28												
SAF205-14	7/8	25	3-3/4	2-3/4	5/8	1/2	1-1/16	1-9/16	7/16	9/32	3/8	SA205-14	F205	1.63											
205-15	15/16	25	95	70	16	13	27.0	42.9	11.5	7.5	3/8	205-15		1.61											
205	1	25	95	70	16	13	27.0	42.9	11.5	7.5	3/8	205		1.56											
205-16	1	25	95	70	16	13	27.0	42.9	11.5	7.5	3/8	205-16		1.54											
206-18	1-1/8	30	4-1/4	3-9/32	23/32	1/2	1-7/32	1-3/4	7/16	11/32	3/8	SA206-18		F206	2.38										
206	1-3/16	30	108	83	18	13	31.0	44.7	11.5	9.0	3/8	206	2.33												
206-19	1-3/16	30	108	83	18	13	31.0	44.7	11.5	9.0	3/8	206-19	2.29												
206-20	1-1/4	30	108	83	18	13	31.0	44.7	11.5	9.0	3/8	206-20	2.22												
SAF207-20	1-1/4	35	4-19/32	3-5/8	3/4	19/32	1-11/32	1-29/32	9/16	3/4	1/2	SA207-20	F207	3.21											
207-21	1-5/16	117												92	19	15	34.0	48.4	14.0	18.8	3.15				
207-22	1-3/8	117												92	19	15	34.0	48.4	14.0	18.8	3.10				
207	1-3/8	117												92	19	15	34.0	48.4	14.0	18.8	3.08				
207-23	1-7/16	117												92	19	15	34.0	48.4	14.0	18.8	3.04				
SAF208-24	1-1/2	40	5-1/8	4-1/32	13/16	19/32	1-13/32	2-1/8	9/16	7/16	1/2	SA208-24	F208	3.96											
208-25	1-9/16	40	130	102	21	15	36.0	53.7	14.0	11.0	1/2	208-25		3.94											
208	1-9/16	40	130	102	21	15	36.0	53.7	14.0	11.0	1/2	208		3.89											
SAF209-26	1-5/8	45	5-13/32	4-1/8	7/8	5/8	1-1/2	2-5/32	5/8	7/16	9/16	SA209-26	F209	4.84											
209-27	1-11/16	45	137	105	22	16	38.0	54.7	16.0	11.0	9/16	209-27		4.71											
209-28	1-3/4	45	137	105	22	16	38.0	54.7	16.0	11.0	9/16	209-28		4.64											
209	1-3/4	45	137	105	22	16	38.0	54.7	16.0	11.0	9/16	209		4.55											
SAF210-30	1-7/8	50	5-5/8	4-3/8	7/8	5/8	1-9/16	2-5/32	23/32	7/16	5/8	SA210-30	F210	5.39											
210-31	1-15/16	50	143	111	22	16	40.0	54.7	18.0	11.0	5/8	210-31		5.35											
210	1-15/16	50	143	111	22	16	40.0	54.7	18.0	11.0	5/8	210		5.28											
SAF211-32	2	55	6-3/8	5-1/8	1	23/32	1-11/16	2-13/32	23/32	15/32	5/8	SA211-32	F211	6.99											
211-34	2-1/8	55	162	130	25	18	43.0	61.4	18.0	12.0	5/8	211-34		6.51											
211	2-1/8	55	162	130	25	18	43.0	61.4	18.0	12.0	5/8	211		6.31											
211-35	2-3/16	55	162	130	25	18	43.0	61.4	18.0	12.0	5/8	211-35		6.18											
SAF212-36	2-1/4	60	6-7/8	5-5/8	1-5/32	23/32	1-29/32	2-5/8	23/32	15/32	5/8	SA212-36	F212	8.73											
212	2-1/4	60	175	143	29	18	48.0	66.3	18.0	12.0	5/8	212		8.51											
212-38	2-3/8	60	175	143	29	18	48.0	66.3	18.0	12.0	5/8	212-38		8.36											
212-39	2-7/16	60	175	143	29	18	48.0	66.3	18.0	12.0	5/8	212-39		8.27											

\* Full cover metal shroud seal standard. Full contact rubber seal (2RS suffix) optional.  
Non-relubricatable units also available (remove G suffix). Contact factory.

