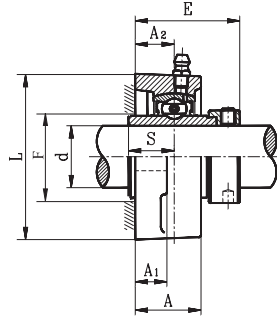
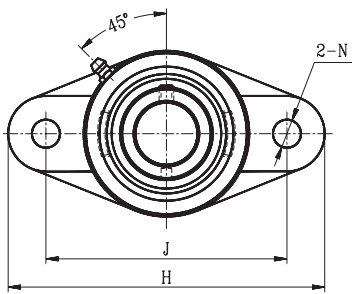


OVAL FLANGE UNITS

HCFL STANDARD DUTY ECCENTRIC LOCKING COLLAR TYPE



- Cast iron housing
- Wide inner ring bearing

Unit No.	Shaft Dia. d		Dimension (in) (mm)										Bolt Size (in)	Bearing No.	Housing No.	Weight (lb)
	(in.)	(mm)	H	J	L	A ₂	A ₁	A	E	N	S	F MIN.				
HCFL201S 201-8S 202S 202-10S 203S 203-11S	1/2 5/8 11/16	12 15 17	3-29/32 99	3 76.5	2-1/4 57	19/32 15	7/16 11	31/32 24.5	1-1/2 38.4	7/16 11.5	9/16 13.9		3/8	HC201 201-8S 202S 202-10S 203S 203-11S	FL203	1.06
HCFL201 201-8 202 202-10 203 203-11 204-12 204	1/2 5/8 11/16 3/4	12 15 17 20	4-7/16 113	3-9/16 90.0	2-3/8 60	19/32 15	7/16 11	1 25.5	1-5/8 41.5	7/16 11.5	21/32 17.0	1-7/32 31	3/8	HC201 201-8 202 202-10 203 203-11 204-12 204	FL204	1.61
HCFL205-14 205-15 205 205-16	7/8 15/16 1	25	5-1/8 130	3-29/32 99.0	2-11/16 68	5/8 16	1/2 13	1-1/16 27.0	1-11/16 42.9	7/16 11.5	11/16 17.4	1-13/32 36	3/8	HC205-14 205-15 205 205-16	FL205	1.76
HCFL206-18 206 206-19 206-20	1-1/8 1-3/16 1-1/4	30	5-13/16 148	4-19/32 117.0	3-5/32 80	23/32 18	1/2 13	1-7/32 31.0	1-29/32 48.1	7/16 11.5	23/32 18.2	1-21/32 42	3/8	HC206-18 206 206-19 206-20	FL206	2.65
HCFL207-20 207-21 207-22 207 207-23	1-1/4 1-5/16 1-3/8 1-7/16	35	6-11/32 161	5-1/8 130.0	3-17/32 90	3/4 19	9/16 14	1-11/32 34.0	2-1/32 51.3	9/16 14.0	3/4 18.8	1-31/32 50	1/2	HC207-20 207-21 207-22 207 207-23	FL207	3.53
HCFL208-24 208-25 208	1-1/2 1-9/16	40	6-29/32 175	5-21/32 100.0	3-15/16 100	27/32 21	9/16 14	1-13/32 36.0	2-3/16 55.9	9/16 14.0	27/32 21.4	2-5/32 55	1/2	HC208-24 208-25 208	FL208	4.19
HCFL209-26 209-27 209-28 209	1-5/8 1-11/16 1-3/4	45	7-13/32 188	5-27/32 148.0	4-1/4 108	7/8 22	5/8 16	1-1/2 38.0	2-1/4 56.9	23/32 18.0	27/32 21.4		5/8	HC209-26 209-27 209-28 209	FL209	5.07
HCFL210-30 210-31 210	1-7/8 1-15/16	50	7-3/4 197	6-3/16 157.0	4-7/32 115	7/8 22	5/8 16	1-9/16 40.0	2-3/8 60.1	23/32 18.0	31/32 24.6	2-17/32 64	5/8	HC210-30 210-31 210	FL210	5.74
HCFL211-32 211-34 211 211-35	2 2-1/8 2-3/16	55	8-13/16 224	7-1/4 184.0	5-1/8 130	31/32 25	25/32 18	1-11/16 43.0	2-11/16 68.6	23/32 18.0	1-3/32 27.7	2-13/16 71	5/8	HC211-32 211-34 211 211-35	FL211	8.38
HCFL212-36 212 212-38 212-39	2-1/4 2-3/8 2-7/16	60	9-27/32 250	7-31/32 202.0	5-1/2 140	1-5/32 29	23/32 18	1-29/32 48.0	2-31/32 75.8	23/32 30.9	1-7/32 30.9	3-1/32 77	5/8	HC212-36 212 212-38 212-39	FL212	10.60
HCFL213-40 213	2-1/2	65	10-5/32 258	8-9/32 210.0	6-3/32 155	1-3/16 30	25/32 20	1-31/32 50.0	3-7/32 81.6	29/32 23.0	1-11/32 34.1	3-5/16 84	3/4	HC213-40 213	FL213	13.20
HCFL214-44 214	2-3/4	70	10-7/16 265	8-1/2 216.0	6-5/16 160	1-7/32 31	25/32 20	2-1/8 54.0	3-1/4 82.6	29/32 23.0	1-11/32 34.1	3-1/2 89	3/4	HC214-44 214	FL214	13.90
HCFL215 215-48	3	75	10-13/16 275	8-27/32 225.0	6-15/32 164	1-11/32 164	7/8 22	2-5/32 55.0	3-1/2 88.8	29/32 23.0	1-15/32 37.3	3-11/16 94	3/4	HC215 215-48	FL215	15.87
HCFL216		80	11-13/32 290	9-3/16 233.0	7-3/32 180	1-11/32 34	7/8 22	2-9/32 58.0	3-5/8 91.9	1 25.0	1-15/32 37.3	3-31/32 101	7/8	HC216	FL216	16.22

* Dual seal standard. Triple lip seal (R3 suffix) optional.

